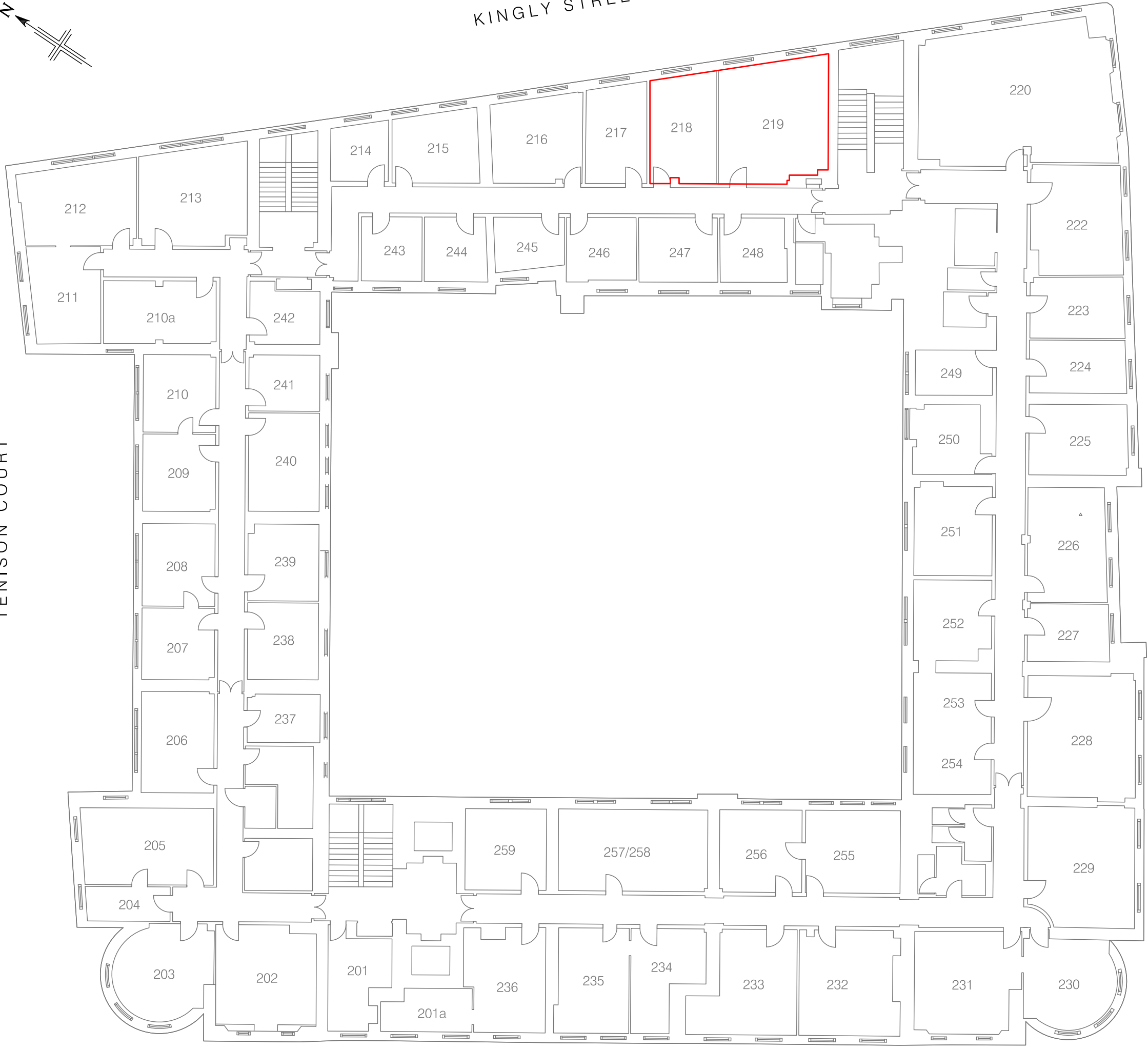


KINGLY STREET

TENISON COURT

BEAK STREET

REGENT STREET



Lease Plan

LINEN HALL

162-168 Regent Street, LONDON, W1

Second Floor - Room 218-219

— Lease Demise

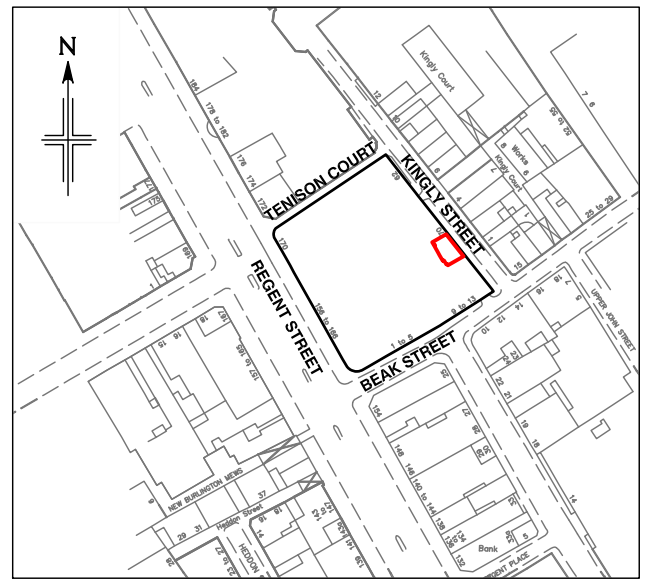
Notes:

Care should be taken when drawings are printed to avoid image distortion.

This drawing is issued for lease registration purposes only and further copies should be printed under the appropriate licence.

Revisions:

- A - Original Issue (March 2009)
- B -
- C -
- D -



Location Plan

Scale 1:2500

This drawing contains Ordnance Survey data which has been reproduced with the permission of the Controller of Her Majesty's Stationery Office, Crown copyright 2003. PCA Licence Number 100020449

Drg No. E4-LINHALL-Rm218

Issue A

March 2009

Presentation Scale 1:200 @ A3

Plowman Craven PCA

- T +44(0)1582 765566
- E info@plowmancraven.co.uk
- F +44(0)1582 765370
- W www.plowmancraven.co.uk